



DriveMoz on Facebook group brings you
THE MAPUTO RING ROAD FOR BEGINNERS



RING ROAD TURN OFF

N4 East to Maputo

Bridge over Matola River

BIG Deco Stone Art Sign

Turn Left 200m after bridge

Turn Left 25°49'51.17"S 32°24'38.35"E



DriveMoz

BEST GROUP for MOZAMBIQUE TRAVEL

Legend

- BIG Deco Stone Art Sign
- Maputo Ring Road Jan 2015
- Odometer Reading



RING ROAD

Google earth

© 2015 Google
Image © 2015 DigitalGlobe



100 m

Ring Road EN4 to Rail

Legend

- Bridge over Matola River
- Circle
- Distance point
- Maputo Ring Road Jan 2015
- Rail Line

N4 East to Maputo
Bridge over Matola River
Turn Left 200m after bridge

Tar Start 0.7km

2.2km 1st Circle

3.4 km Make semi U-Turn

4.2km Rail Line
Fork Left
4.5km

DriveMoz

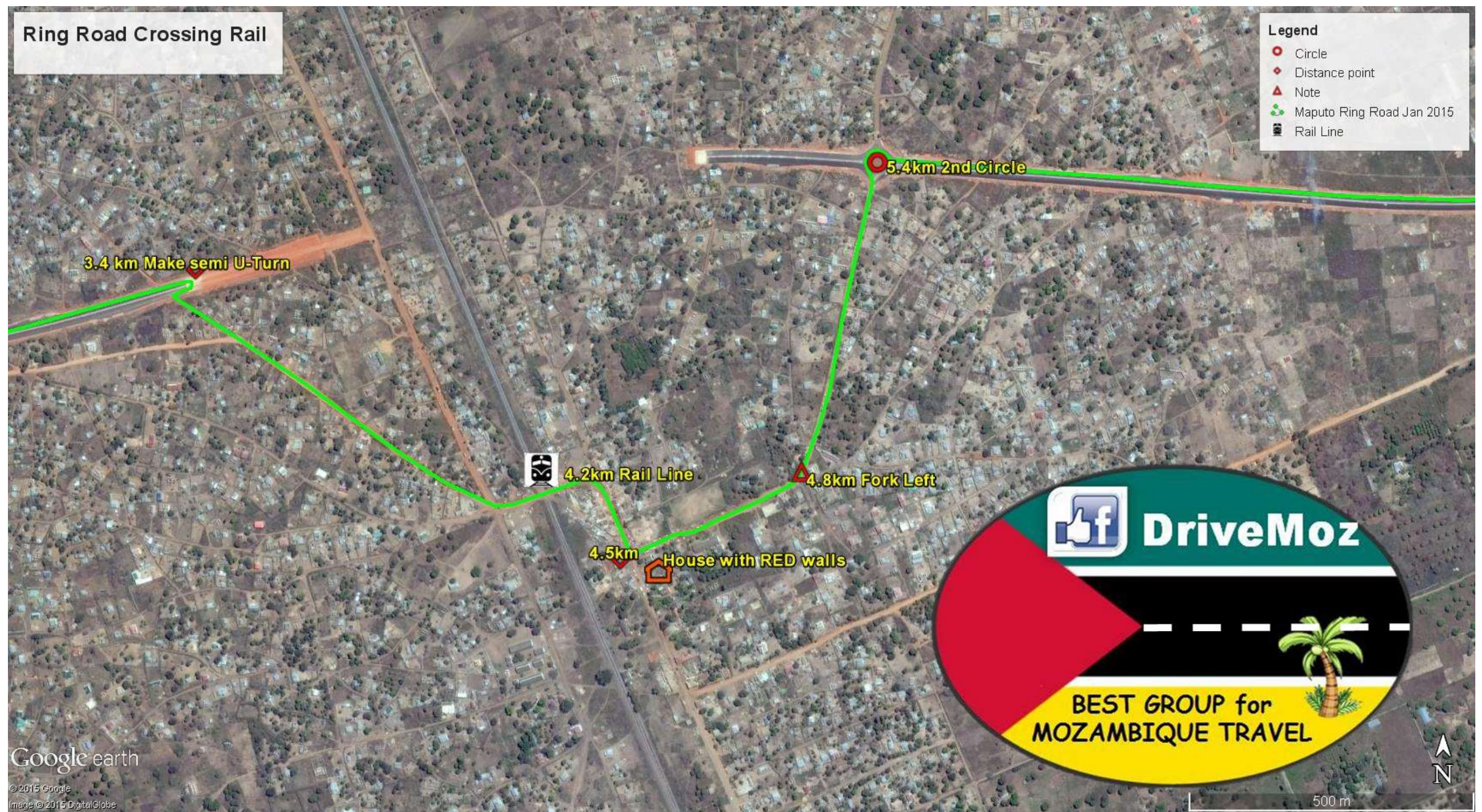
BEST GROUP for MOZAMBIQUE TRAVEL



Ring Road Crossing Rail

Legend

- Circle
- ◇ Distance point
- △ Note
- 🌳 Maputo Ring Road Jan 2015
- 🚂 Rail Line



3.4 km Make semi U-Turn

5.4km 2nd Circle

4.2km Rail Line

4.8km Fork Left

4.5km House with RED walls

 DriveMoz

BEST GROUP for MOZAMBIQUE TRAVEL



Ring Road After Rail Line



Legend

- Circle
- ◇ Distance point
- ▲ Note
- 🌿 Maputo Ring Road Jan 2015
- 🚂 Rail Line

Mabilinga



Ring Road joins EN1

Legend

- Circle
- Maputo Ring Road Feb 2015
- Vodacom Tower



DriveMoz

BEST GROUP for MOZAMBIQUE TRAVEL

